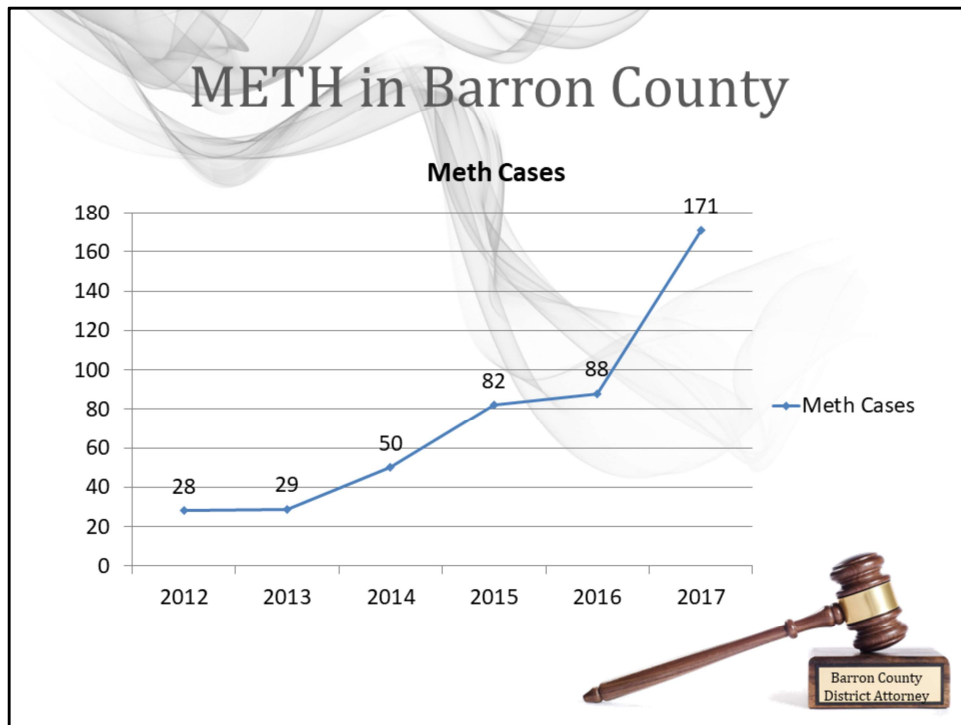




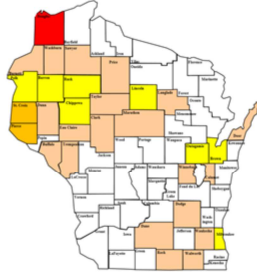
Chris-
Welcome everyone, talk about how the night will go.



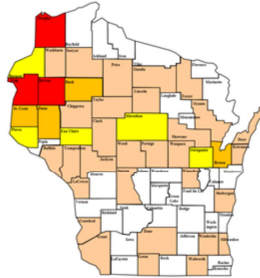
Angie-
Simple Meth cases charged in DA office

METH in Northwestern WI

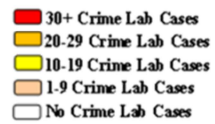
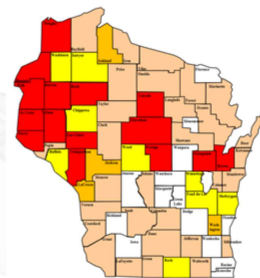
Meth Cases, WI State Crime Lab-2009



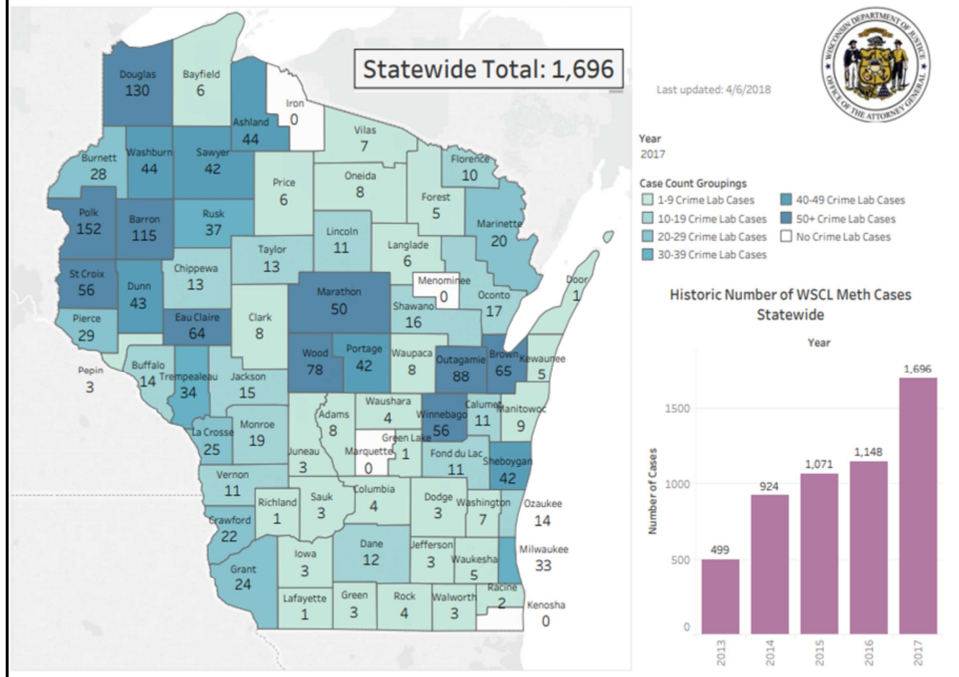
Meth Cases, WI State Crime Lab-2012

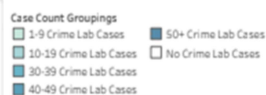


Meth Cases, WI State Crime Lab-2016

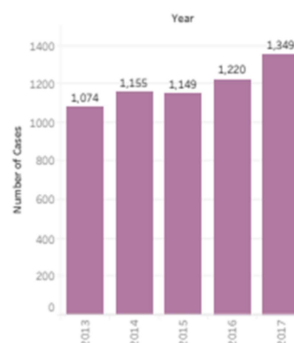


Number of Wisconsin State Crime Laboratory Bureau Meth Cases for 2017



Year
2017

Historic Number of WSCL Heroin Cases Statewide



What is METH?

P. 1

METH A synthetic stimulant that affects the central nervous system

Full name: Methamphetamine


Nicknames: Ice, speed, chalk, crystal, glass, crank, yaba, fire, tina, tweak, poor man's cocaine, uppers, trash, yellow bam, methlies quick, stove top, go-fast

Composition: Pseudoephedrine, a decongestant, and a number of toxic ingredients like lye and drain cleaner

Form: White or yellowish crystalline powder, crystals, or a pill

Use: Snorted, smoked, injected, or swallowed

Addiction Factor: Extreme—one of the most addictive substances



Source: Methproject.org

Chris,

Crystal meth is mostly heated and then **smoked in a glass pipe**. Less frequently, the drug is crushed up to be snorted or injected. Smoking crystal meth speeds the delivery of the substance into the **bloodstream**, which further promotes the addictive nature of the substance.

METH in Barron County



Chris- example of a recent bust. Talk about these quantities.

1 gram of meth =
Value \$50-\$100



Teener (1.75 grams) =
Value \$100-\$175



Ball (3.5 grams) =
Value \$200-300



$\frac{1}{4}$ oz (7 grams) =
Value \$300-\$400



Ounce (28 grams) =
Value \$1200-\$1600



METH Paraphernalia



Chris-

Talk about the different types and what to look for.

Glass pipes

Butane torches/lighters

Needles

Rubber tie-offs (for injection sites)

White residue on dresser/counter tops

White residue on razor blades and mirrors

Snorting tubes

Pieces of tin foil with charred residue

Small ziplock baggies with white residue

Digital scales

Where is it Coming From?

Super Labs

- Mexico
- California
- Southwestern U.S.



Image Credit: U.S. Department of Justice National Drug Intelligence Center

Local Labs

- Northwestern WI
- One-Pot-“Shake n’ Bake” method



Chris-

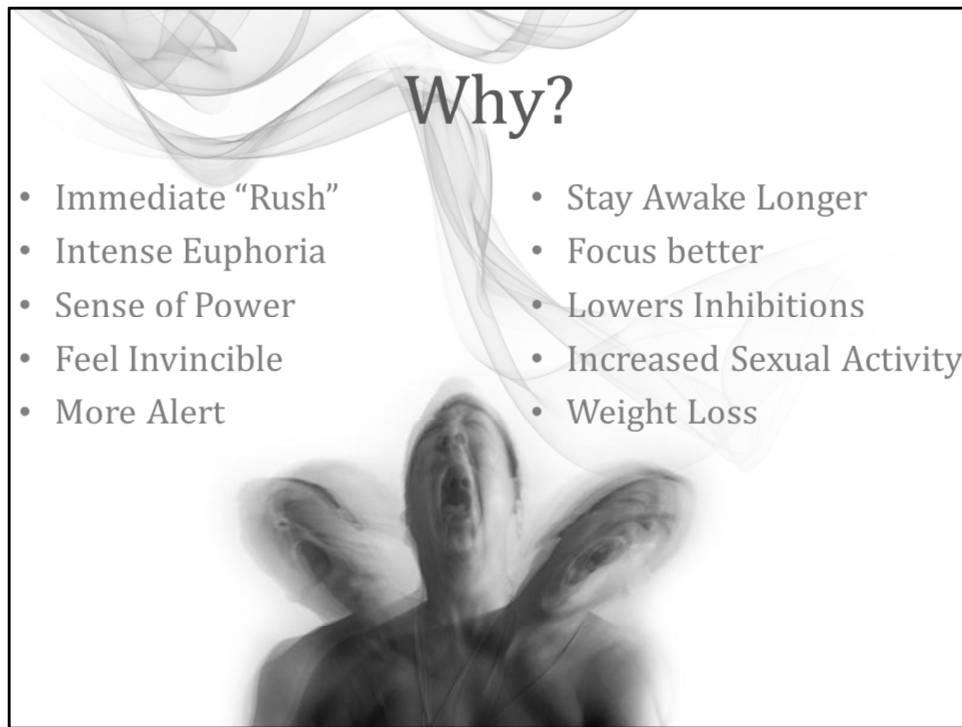
Contrary to popular belief, most meth users do not operate meth labs.

An estimated **80 percent** of the U.S. supply comes instead from organized drug cartels, which manufacture meth for national distribution in a small number of massive California “superlabs.”

Roadside clean up- watch for these items (Shake and Bake)



Chris



Why?

- Immediate “Rush”
- Intense Euphoria
- Sense of Power
- Feel Invincible
- More Alert
- Stay Awake Longer
- Focus better
- Lowers Inhibitions
- Increased Sexual Activity
- Weight Loss

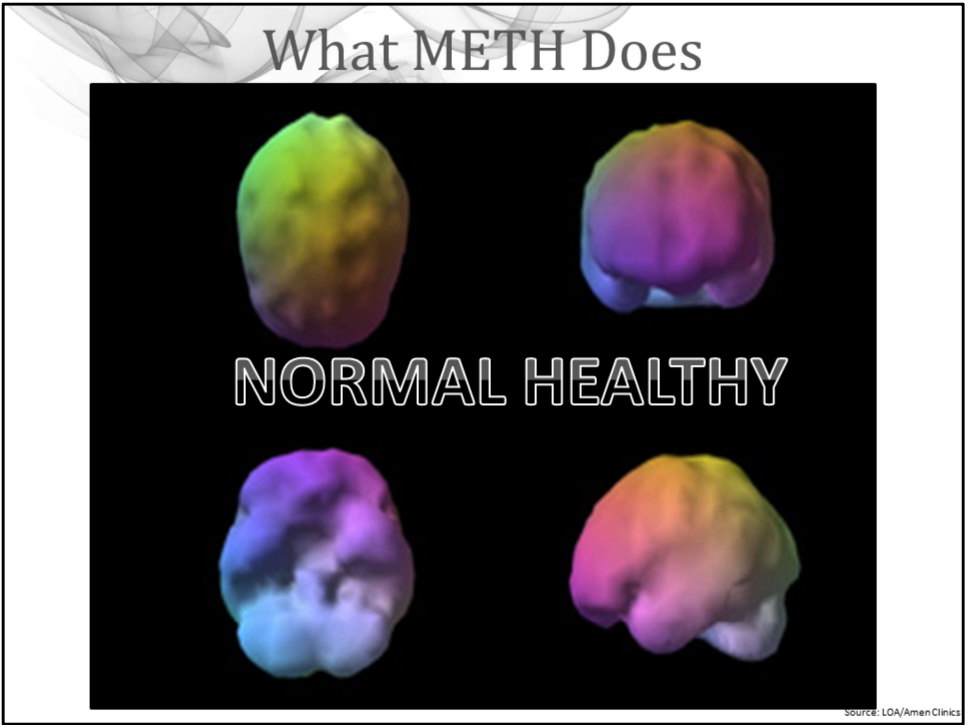
Chris

What to Look for

- Not caring about personal appearance or grooming
- Picking at hair or skin
- Loss of appetite and weight loss
- Dilated pupils and rapid eye movement
- Strange sleeping patterns
- Twitching/facial tics
- Constant talking
- Borrowing money often, selling possessions, or stealing
- Angry outbursts or mood swings
- Paranoia and hallucinations

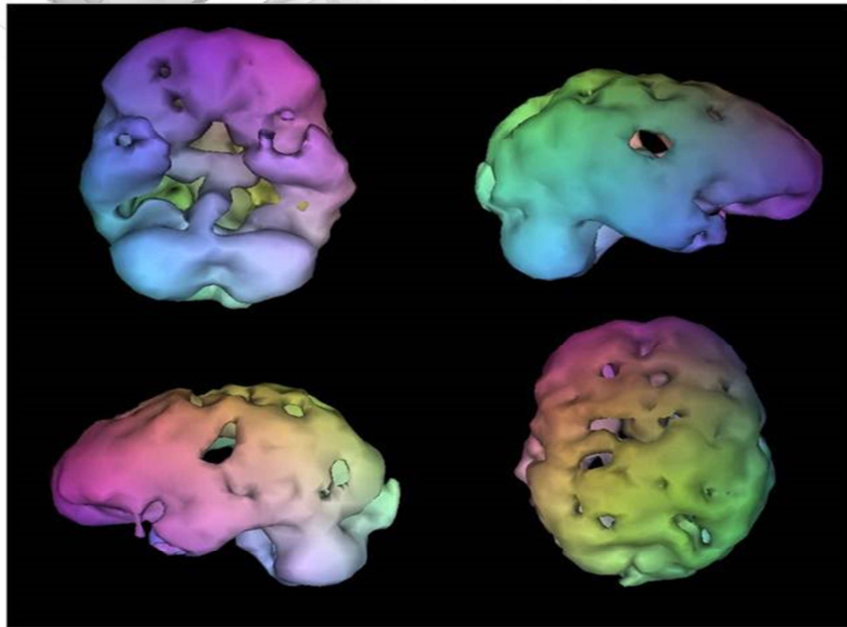
Source: webmd.com

Chris



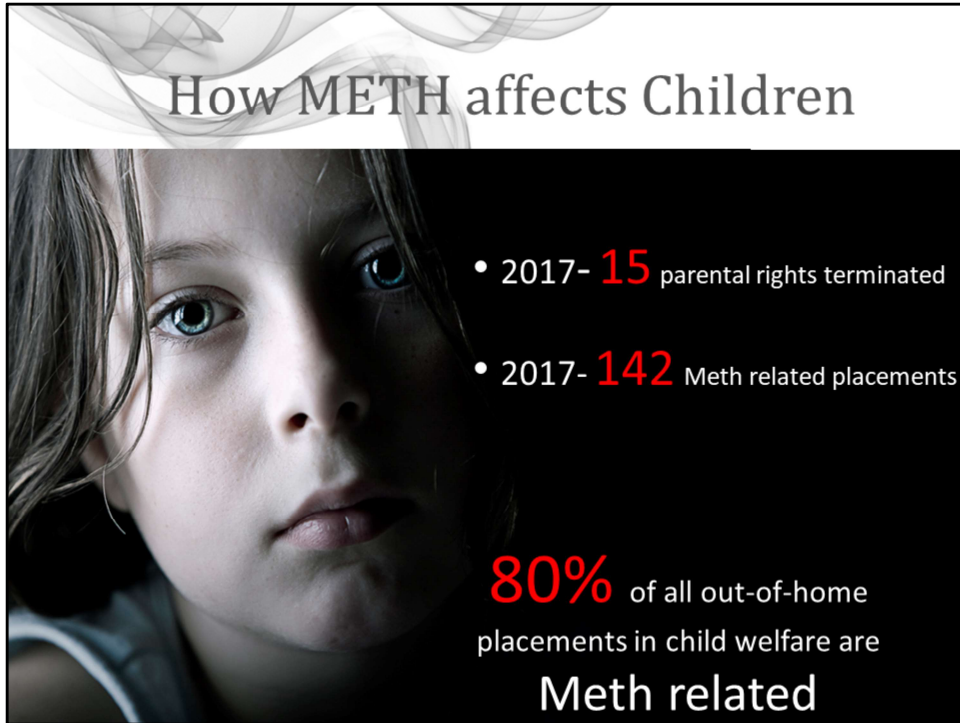
Chris

What Meth Does



Source: LOA/Amen Clinics

Chris
Meth user brain



How METH affects Children

- 2017- **15** parental rights terminated
- 2017- **142** Meth related placements

80% of all out-of-home placements in child welfare are
Meth related

Stacey/Karla
2016 (through august)- 26

12 cases of Termination of Parental Rights were completed in 2015 - this effected **22 children**

2015 and through August of 2016 we had 7 screened in unborn cases where the parent was using meth.

Since September there have been 35 placements...29 due to meth. (83%)

Behaviors in Young Children Exposed to METH

- Hyperactivity
- Poor appetite or poor feeding
- Very sensitive to light, sound or other sources of stimulation
- Significant irritability
- Dislike of being touched or held
- Increased risk of SIDS



Stacey/Karla

What it's Costing

- DHHS-2017 (2.8 million)
- Law Enforcement Costs
–(SO minimum \$200,000)
- Tax dollars
- Health Care Costs



Stacey/Karla

What is cost tax payer to work with three families, nearly \$300,000 (7 adults, 11 children)

Cost for 2015 – DHHS \$1,206,500.00

This is CPS and Addiction services costs

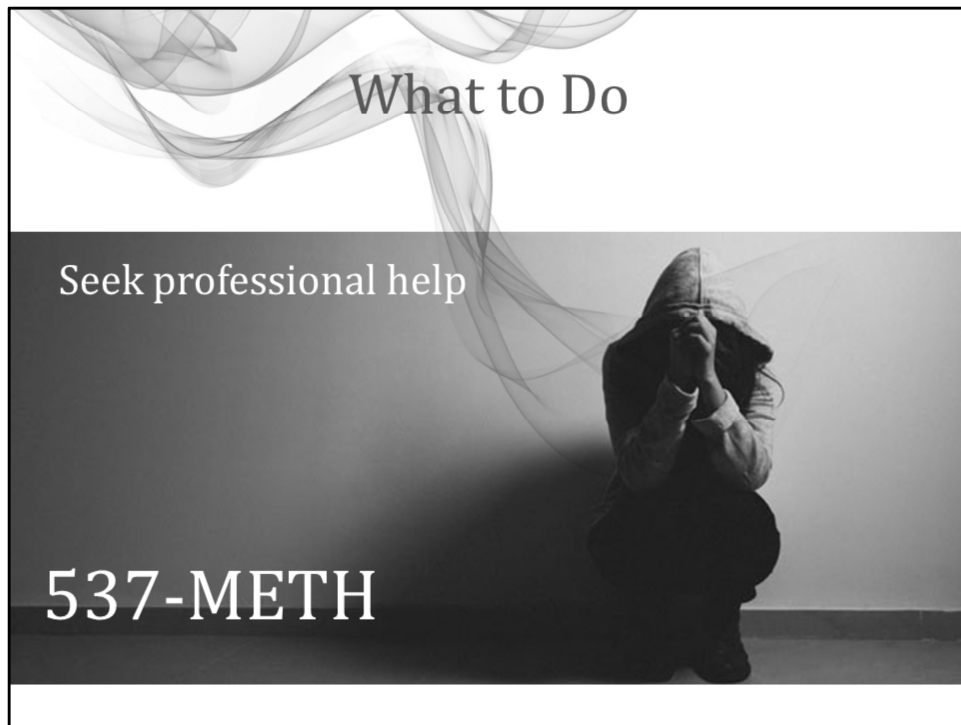
Sheriff- Drug unit, Drug Court and jail costs, patrol- too large of a number to even begin to calculate

Bottom line, its costing us all A LOT!



Stacey/Karla-non monetary costs

You could refer back to your numbers on parents/children



Chris-

Meth [addiction](#) is one of the hardest drug addictions to treat, but it can be done. If you know someone with the problem, don't try to help him by yourself. Users need a professional counselor or drug treatment program. To find resources in your area call 537-METH

What We Are Doing

TOGETHER WE CAN PROTECT OUR FUTURE



Don't Meth Around

Report Activity or Seek Help 715-537-METH

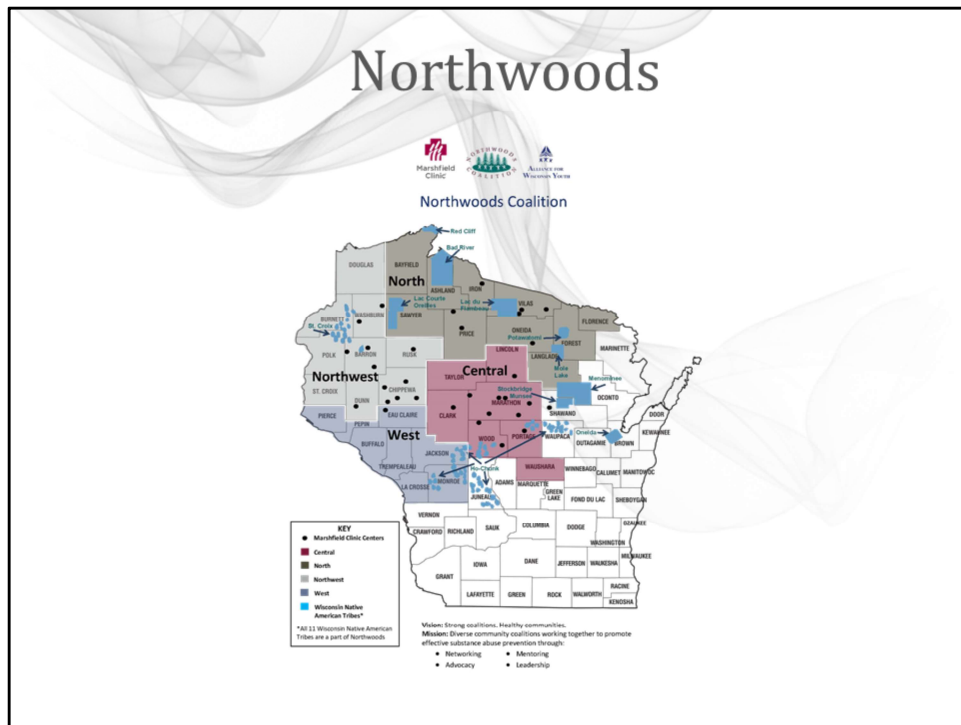
Since most of the money and resources available were for opioids, It was time to bring in partnerships to make the little resources we did have go farther



Operation kNOw Meth Plan

- 40+ point plan
 - Increase media attention
 - Quit making meth addiction seem so hopeless
 - Educate workforce
 - Continue to expand treatment options
 - Foster parent/Foster care
 - Tribal involvement
 - Housing
 - Hold meth dealers accountable

Reference meth plan



Including bringing this region wide- brought this to NWC to start working regionally. From there a regional Meth Task Force consisting of 11 counties and 4 tribes was formed.

Town Hall Meetings





Our first step was to educate the local communities on the problem through town hall meetings. Multiple town halls were held, including tribal meetings

Mock Rooms and Backpacks



Used to further educate the community.
fairs, teacher conferences, civic clubs, churches, businesses, trained other coalitions
in how to do this added into town halls

STRENGTHENING FAMILIES AND BREAKING CYCLES OF ADDICTION

12 STEP DISCUSSION
THURSDAYS @ 7PM

NAR-ANON
FOR FAMILY AND FRIENDS
THURSDAYS @ 6PM

FOSTER CARE PROGRAM
RECRUITMENT, FOSTER FAMILY SUPPORT & START UP HELP

RED CEDAR RESTART
EDUCATION, COACHING, & SUPPORTS
LAUNCHING EARLY 2017 IN THE BC JAIL

REGROUP SUPPORT GROUP
STARTING DEC 1ST @ 6PM AT THE GAP

FOR MORE INFORMATION EMAIL: outreach@redcedarchurch.com

Red Cedar Representative



Chris

- you're an Employer**; consider hiring one of our participants or recovering addict who are qualified to meet your staffing needs.
- If you're a Landlord**; consider renting to one of our participants or recovering addict, perhaps even at a reduced rate.
- If you're a recovering alcoholic or addict** with long-term sobriety actively involved in AA or other similar recovery programs, consider sponsoring a participant.
- If you're a professional** (e.g. Doctor, Lawyer, Counselor, etc.), consider donating some of your time or services to a participant in need.
- If you're just a concerned citizen**, consider becoming a volunteer or a mentor. Invite those in recovery to your book club, garden club, sports teams, etc...help them to find sober activities and friends

What You Can Do

537-METH

kNOw METH Barron County on Facebook

TALK about it- prevention is key

ASK questions

Chris-



Chris-

Support those in recovery, help them find sober activities, invite them to a book club, garden club or to join your sports team. Establish support groups or programs, perhaps a sober sports league.

Contact your elected officials, let them know that we have a problem with meth and need their help, keep them informed

You know where the drugs are in our community! We need your help! Even though its hard we need you to call on your neighbor, your uncle, your cousin, your sister. **You can put a stop to it!** Call and Call often, even if nothing happens right away, keep calling! It helps to build a case.



Chris-

Support those in recovery, help them find sober activities, invite them to a book club, garden club or to join your sports team. Establish support groups or programs, perhaps a sober sports league.

Contact your elected officials, let them know that we have a problem with meth and need their help, keep them informed

You know where the drugs are in our community! We need your help! Even though its hard we need you to call on your neighbor, your uncle, your cousin, your sister. **You can put a stop to it!** Call and Call often, even if nothing happens right away, keep calling! It helps to build a case.



Chris

1. Watch for signs of drug use- depression, falling grades, isolation, and change in friends and find help if you suspect your child is using drugs.
3. Keep your child active. Students that have a goal they are working toward in life or are busy with sports or music are much less likely to get involved with drugs.
4. Take care of their emotions. Teens today are under a lot of pressure with school, sports, and relationships. Be careful that they are not too worried or stressed about these things. Teach them good techniques to handle stress.
5. Model good behavior. If your teen sees you doing things like getting drunk, smoking, or self-medicating somehow, they will be more likely to do so themselves, and sometimes this can lead to worse habits, like drug or alcohol abuse.
6. Don't leave your child unsupervised for long. In a world where many families require 2 incomes or single parents are raising children, this may be difficult, but it is so important to not just leave your child to fend for themselves after school. The time when most teens get into trouble or start a harmful behavior is the time between school letting out and when their parents get home.
7. Know your child's friends. If you are suspicious of whom your teen is spending time with, talk to them. Invite the friends over to your house to get to know them. If you have concerns about their friends, talk to your child about it.
8. Know where your teen is. Teens should follow household rules about curfew and keeping you informed about where they are going. If something doesn't seem quite right, don't be afraid to question your child about where they've been. You are the adult and the sooner your child sees that you are going to check up on them, the better.
9. Know your child. If you work on your relationship with your child when they are young, it will be easier to talk about drugs and know what they are up to when they are older. Build a bond early so it can survive those tough teenage years.

Drugs Over Dinner

TALK TO YOUR KIDS ABOUT

DRUGS over dinner

**YOU ARE THE MOST IMPORTANT
INFLUENCE IN THEIR LIVES**

Take recommendations from the report and create a local plan

Talk to Your Kids

(even if it feels like this)



Chris

QUESTIONS?



Chris-

We about 30 minutes for question for any of our panel members